

NOTICE TO MARINERS

185 (T) of 2017

Issued by Brisbane Maritime Region on 19 May 2017

Area: Brisbane pilotage area

Locality: Mooloolah River Bar

Activity: Shoaling

Mariners are advised that a hydrographic survey of the Mooloolah River and its coastal bar on Wednesday, 17 May 2017, shows a shoal patch extending from the end of the eastern breakwater in a westerly direction past the centreline of the channel. The shoal has a least depth of approximately 0.8 metres at LAT on the entrance channel's centreline, as well as a least depth of approximately 0.3 metres at LAT to the east of the channel's centreline. There is deeper water to the west of the channel's centreline.

Map S11-338, attached, shows the extent of the shoaling. Copies of the survey plan are available from the Sunshine Coast office of Maritime Safety Queensland at Mooloolaba.

Masters of smaller recreational boats, personal watercraft, and passive craft like kayaks and canoes must remain mindful of the heightened risk to larger vessels navigating the river entrance and coastal bar. Except for entering and departing the river, these smaller vessels and passive craft should keep well clear of the coastal bar and not use it for recreational purposes.

Mariners must remain mindful that coastal bars are dynamic in nature with conditions constantly changing. Mariners must plan their crossing of the Mooloolah Bar, having careful consideration to prevailing conditions, the state of the tide, and the draught of their vessels. The coastal bar must be navigated with extreme caution.

Mariners are also reminded that the Mooloolah River entrance is defined as a coastal bar. This means that each person on board an open boat less than 4.8 metres in length must wear an appropriate life jackets while the boat is crossing the coastal bar..

Refer to notice: 159(T) of 2017

Cancel notice: 159(T) of 2017

AUS charts affected: 235

Latitude and longitude positions are on WGS84 horizontal datum and are compatible with GDA94 datum.

For further information about this notice, please contact:

The Brisbane Regional Harbour Master's office:

Phone: 07 3632 7500

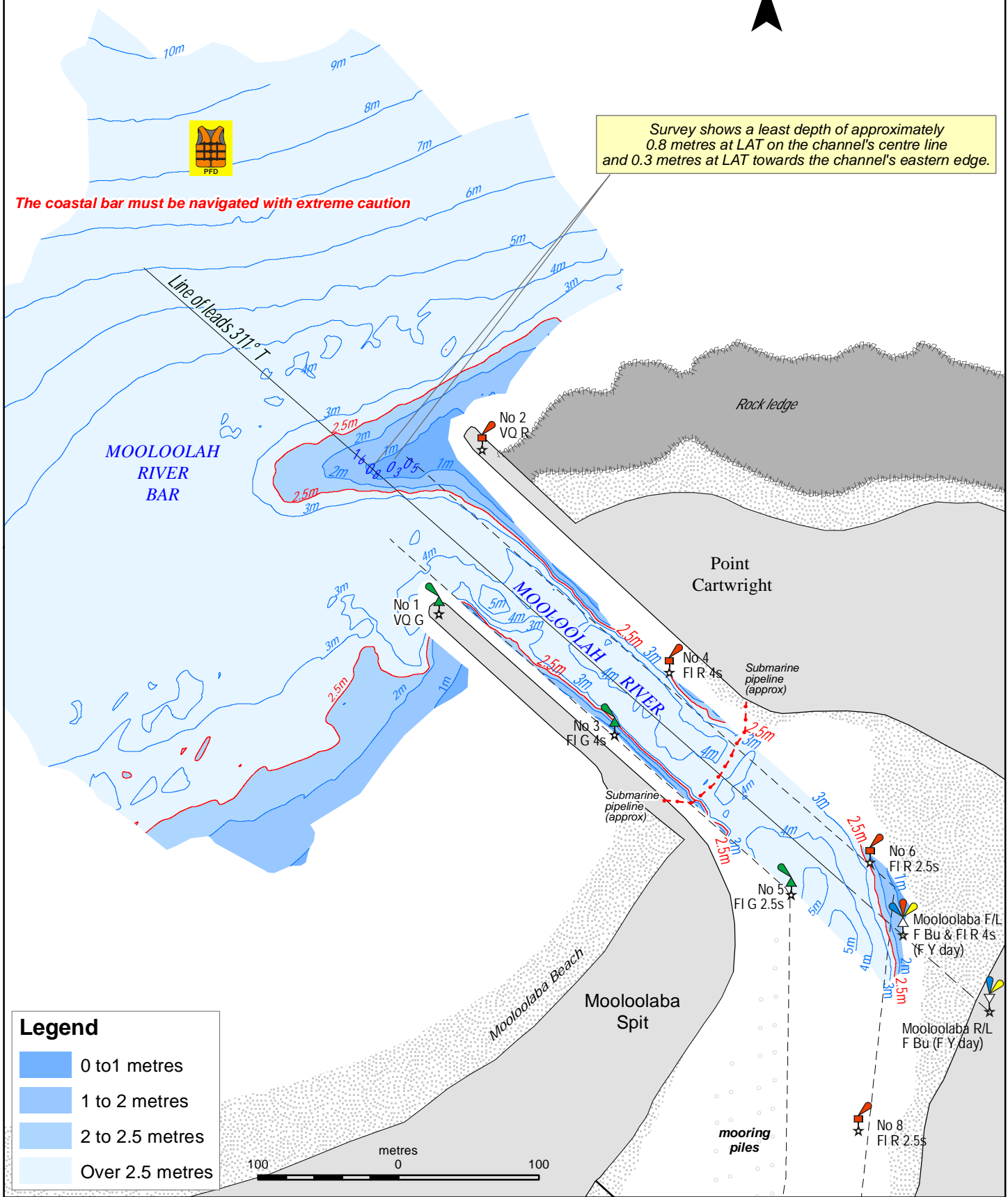
Email: vtsbrisbane@msq.qld.gov.au

Notice authorised by: Regional Harbour Master (Brisbane) - Maritime Safety Queensland

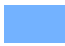
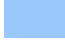
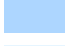
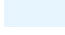


Survey shows a least depth of approximately 0.8 metres at LAT on the channel's centre line and 0.3 metres at LAT towards the channel's eastern edge.

The coastal bar must be navigated with extreme caution



Legend

-  0 to 1 metres
-  1 to 2 metres
-  2 to 2.5 metres
-  Over 2.5 metres

To be used with appropriate NTM
© The State of Queensland 2017
(Transport and Main Roads)



Licence available to view at
<http://creativecommons.org/licenses/by-nc-nd/4.0/>

Prepared 19 May 2017
Maritime Safety Queensland

QUEENSLAND NOTICE TO MARINERS

Issued by Maritime Safety Queensland

MOOLOOLAH RIVER BAR

Surveyed 17 May 2017

QNTM updates also available from www.msq.qld.gov.au
Datum: GDA94 horizontal. LAT vertical
Map projection: UTM (MGA zone 56)
Map S11-338

